

CMI
ROADBUILDING INC.



COLD PLANERS

ROTO-MILL™

RM-6 / RM-7

MORE POWER > MORE WEIGHT > MORE CUTTING

WWW.CMI-ROADBUILDING.COM

CMI are proud to introduce our updated Roto-Mill™ milling machine range. Designed with input from operators and industry leaders, Roto-Mill™ delivers the most complete set of standard and optional high performance features in the industry.

CMI has the most experience in the industry in providing and supporting roadbuilding equipment worldwide. All CMI equipment is designed for the lowest cost of operation and ownership and highest throughput in a variety of conditions and missions.



Features



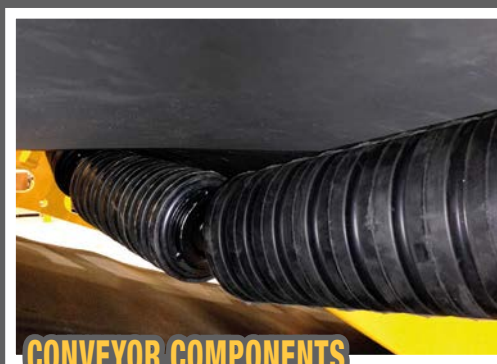
TOUCH SCREEN CONTROL SYSTEM

Standard control package features the largest (12") high resolution, high contrast graphic control screen in the industry providing excellent visibility during day and night operation.



CUTTER DRUM

Full range movement lift and hinge cutter door provides efficient and easy access for tooth change out and replacement.



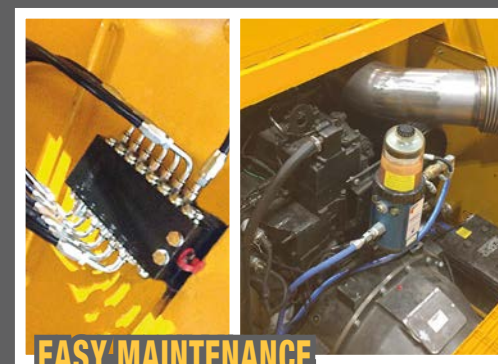
CONVEYOR COMPONENTS

Catenary style suspended idlers with rubber impact rings provide for easy maintenance over fixed idler designs.



MODULAR SYSTEM DESIGN

Our modular control system design approach using common parts provides redundancy, reduces spares requirements and allows us to easily add additional functions and control options.



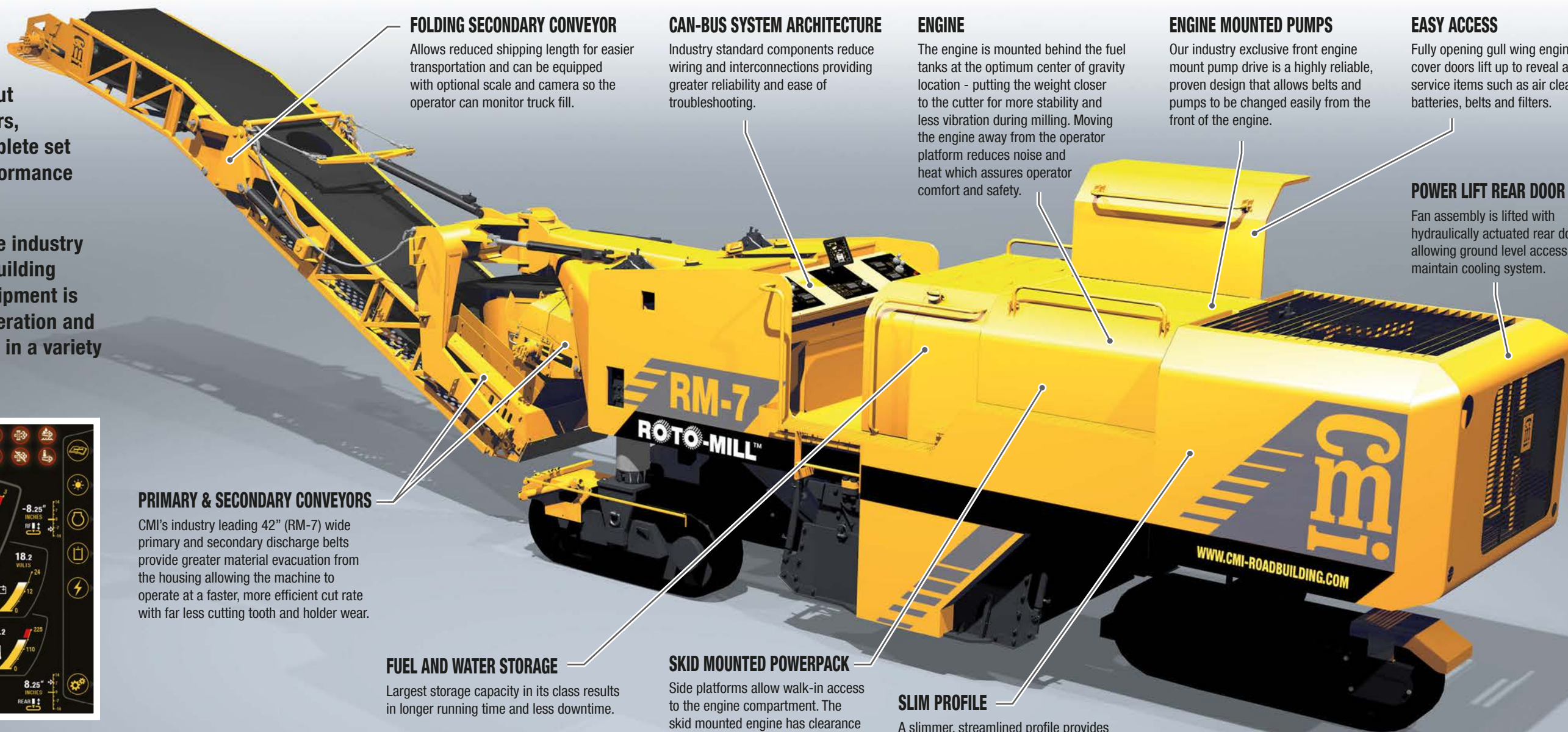
EASY MAINTENANCE

Centralised lubrication points make regular maintenance simple while all engine fluids fill/check locations are easily reached via walkways and oil filters are easily accessible from the ground.



EASY TROUBLESHOOTING

Multiple lower level screens identify the location of problems and provide simple "smart" status codes to allow for easy maintenance and troubleshooting.



FOLDING SECONDARY CONVEYOR

Allows reduced shipping length for easier transportation and can be equipped with optional scale and camera so the operator can monitor truck fill.

CAN-BUS SYSTEM ARCHITECTURE

Industry standard components reduce wiring and interconnections providing greater reliability and ease of troubleshooting.

ENGINE

The engine is mounted behind the fuel tanks at the optimum center of gravity location - putting the weight closer to the cutter for more stability and less vibration during milling. Moving the engine away from the operator platform reduces noise and heat which assures operator comfort and safety.

ENGINE MOUNTED PUMPS

Our industry exclusive front engine mount pump drive is a highly reliable, proven design that allows belts and pumps to be changed easily from the front of the engine.

EASY ACCESS

Fully opening gull wing engine cover doors lift up to reveal all service items such as air cleaners, batteries, belts and filters.

POWER LIFT REAR DOOR

Fan assembly is lifted with hydraulically actuated rear door allowing ground level access to maintain cooling system.

PRIMARY & SECONDARY CONVEYORS

CMI's industry leading 42" (RM-7) wide primary and secondary discharge belts provide greater material evacuation from the housing allowing the machine to operate at a faster, more efficient cut rate with far less cutting tooth and holder wear.

FUEL AND WATER STORAGE

Largest storage capacity in its class results in longer running time and less downtime.

SKID MOUNTED POWERPACK

Side platforms allow walk-in access to the engine compartment. The skid mounted engine has clearance from below for easy access for maintenance and repair.

SLIM PROFILE

A slimmer, streamlined profile provides greater visibility and a better sight line for the operator to the ground.

ROTO-MILL™ TECHNICAL SPECIFICATIONS

	RM-6	RM-7
ENGINE	Cummins QSX 15, 15L 675 hp (503 kW) @ 1875 rpm	Cummins 19L 755 hp (563 kW) @ 1800 rpm
	Turbo charged after-cooled diesel engine, Tier 4 final.	
PROPULSION SYSTEM	Hydrostatic drive. Variable speed ground drive motors with anti-spin.	
TRACKS	Wide tracks with replaceable polyurethane pads, driven via planetary gearboxes.	
	3 & 4 Track: 14" (356 mm) wide front and rear	3 Track: 14" (356 mm) wide front and 16" (406 mm) rear 4 Track: 14" (356 mm) wide front and rear
TURNING RADIUS	76" (1930 mm) with 75" (1905 mm) cut	81" (2057 mm) with 86" (2184 mm) cut
SPEED	0-3.2 mph (0-5 kph)	
CONVEYORS	36" (914 mm) wide primary and secondary conveyors	42" (1066 mm) wide primary and secondary conveyors
	120° swing secondary conveyor (folding option available). Full length dust covers and easy maintenance idlers	
OPERATORS STATION	Right and left operator panels with dual joysticks	
ELECTRICAL SYSTEM	24v system with interchangeable switch modules	
CONTROL SYSTEM	Centre mounted pivoting 12" full colour LCD display. Backlit operators console and ground control boxes. Control system displays faults in plain text. Operators manuals retrievable on screen.	
CUTTER HOUSING	Belt drive from engine mounted clutch. Housing mounted Fairfield W-50 planetary reducer Rear door lifts and pivots for increasing access	
CUTTER	75" (1905 mm) wide standard cutter - optional: 86" (2184mm)	86" (2184 mm) wide standard cutter - optional: 103" (2616mm)
	44" (1118 mm) tooth tip diameter 13" (330 mm) maximum cut depth	48" (1219 mm) tooth tip diameter 14" (355 mm) maximum cut depth

		RM-6	RM-7
FLUID CAPACITIES	Fuel:	315 gal (1192 l)	360 gal (1363 l)
	Hydraulic fluid:	45 gal (170 l)	65 gal (246 l)
	Water:	935 gal (3539 l)	1100 gal (4164 l)
DIMENSIONS & WEIGHTS	Shipping height:	9' 8" (2946 mm)	9' 10" (2977 mm)
	Shipping length:	44' (13411 mm)	46' 1" (14046 mm)
	Overall length:	53' 1" (16180 mm)	55' 4" (16866 mm)
	Overall width:	7' 8" (2337 mm)	8' 6" (2591 mm)
	Overall height:	18' 7" (5664 mm)	18' 7" (5664 mm)
	3 Track:	68,000 lbs (30844 kg)	82,000 lbs (37195 kg)
	4 Track:	72,000 lbs (32659 kg)	86,000 lbs (39000 kg)

BENEFITS

- Incorporates CMI's extensive experience in milling to provide an efficient, high performance mill
- Attention to detail results in improved maintenance access and reduced service time
- Best in class conveyor capacity means less tooth wear and better productivity
- On-board diagnostics and manuals provide ease of maintenance and reduced downtime

OPTIONS

- Three (3) wide angle cameras mounted to provide additional visibility
- CMI REMOTE MONITORING: Cellular modem with integration to machines CAN network, allows remote monitoring
- Canopy to cover operators station
- Moba 2D / Topcon 2D Grade control system



All reasonable steps have been taken to ensure the accuracy of this publication. However, due to our policy of continual product development, CMI Roadbuilding Inc. reserve the right to change details without prior notice. All machines supplied in accordance with our standard conditions. Illustrations and photos may show optional equipment. Standard Havens is a registered trademark of CMI Roadbuilding Limited in the United Kingdom, the European Union and Australia. All rights reserved. Copyright © CMI Roadbuilding Inc. 2018.

DEALER STAMP