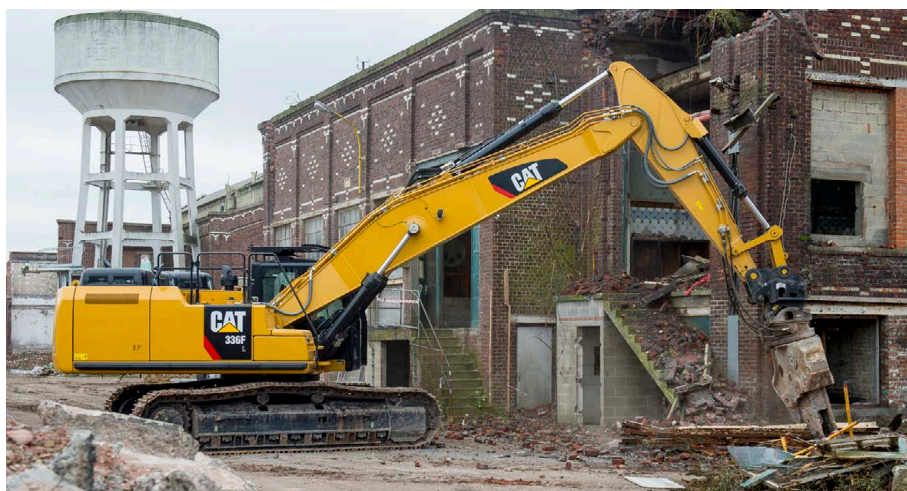


Construction equipment is experiencing a technological evolution, and excavators are no exception. Today's excavators boast increased capabilities, productivity and efficiencies, plus are easier to service and maintain. Sort through the following information to find the right combination of qualities for your jobsites, then turn to the reader service card following page 24 for more information. To access the **exclusive interactive, customizable version of this spec guide**, plus find details on specific models via the online Buyers Guide, visit ForConstructionPros.com.



Caterpillar Inc.

Cat GRADE with Assist — the latest Cat Connect Technology for excavators — delivers gains in customer efficiency and productivity. Cat GRADE with Assist on the 323F provides 2D technology, all contained in the machine. The technology automates grade adjustments that are typically done by the operator using manual controls. Operators at all elevation levels can reach target grade up to 45% faster than traditional grade and check techniques. It's quick to set up because there is no base station or satellite. The system is also scalable, which means 3D GPS can be added to meet more advanced site development work.

Indicate 150 on inquiry card

Caterpillar Inc.						
Model	Net HP	Operating Weight (lbs.)	Std. Bucket (cu. yds.)	Breakout Force (lbs.)	Max. Dig Depth	Max. Reach at Ground Level
311F RR	70	30,600	.27-1.0	17,900	18' 4"	26' 7"
313F	92	29,770	.27-1.0	19,200	19' 10"	28' 3"
313F L GC	70	32,200	.27-1.0	19,300	19' 9"	28' 3"
315F	97	33,160	.27-1.0	19,200	19' 6"	28' 6"
316F	117	38,580	.46-1.19	22,000	21' 7"	30' 5"
318F	117	41,670	.46-1.19	24,400	21' 7"	30' 1"
320F	161	48,500	.61-2.06	30,100	22' 1"	32' 4"
321D LCR	148	53,308	.61-2.05	28,079	22'	32' 1"
323F	161	56,438	.61-2.08	28,300	22' 1"	32' 4"
323F SLR	161	53,100	.69	N/A	38' 4"	51' 7"
325F	161	57,115	.72-2.08	30,124	22'	32' 1"
326F	203	64,831	.68-2.46	33,500	22' 4"	33' 2"
326F SLR	203	64,831	.75-.90	N/A	48' 4"	60' 6"
329F	239	63,002	.83-2.40	31,500	23' 9"	35'
330F	239	68,209	.68-2.58	35,519	25' 6"	36' 7"
330F SLR	239	68,180	.75-.90	N/A	48' 5"	60' 5"
336F	303	80,500	.95-3.52	42,380	26' 10"	38' 5"
336F XE Hybrid	303	81,800	.95-3.52	42,380	26' 10"	38' 5"
335F	200	83,703	.68-2.58	35,500	22' 11"	34' 11"
349F	396	107,200	1.2-5.0	52,830	26' 11"	39' 10"
349F XE	417	108,300	1.24-4.04	52,830	26' 11"	39' 10"
352F	396	117,500	1.2-5.0	52,830	26' 5"	39' 9"
374F	472	156,461	2.5-6.0	70,523	28' 2"	43' 2"
390F	524	190,204	2.8-8.5	81,673	31' 8"	48' 2"
M314F*	141	34,746	.20-1.31	23,155	19'	29' 9"
M316F*	141	36,102	.46-1.9	25,628	20'	30' 10"
M318F*	169	40,587	.46-1.9	22,705	20'	30' 10"
M320F*	169	43,982	.5-1.65	22,427	20' 9"	31' 5"
M322F*	169	48,722	.5-1.65	34,171	21' 10"	33' 5"

*Wheeled



Case Construction Equipment

Faster cycle times are made possible by a new, electronically controlled pump, a larger control valve and multiple sensors. These features combine with the Case Intelligent Hydraulic System and its four integrated control systems to make the best use of the machine's hydraulic power and momentum, resulting in added strength and fuel efficiency.

Indicate 151 on inquiry card

Case Construction Equipment						
Model	Net HP	Operating Weight (lbs.)	Std. Bucket (cu. yds.)	Breakout Force (lbs.)	Max. Dig Depth	Max. Reach at Ground Level
CX31B	23	7,320	.08-.16	6,227	9' 3"	14' 1"
CX36B	23	8,212	.08-.24	6,227	10'	14' 7"
CX55B	37	11,312	.11-.36	11,128	12' 10"	17' 8"
CX75C SR	55	16,200	.21-.59	12,800	13' 7"	20' 7"
CX80C	55	18,800	.24-.59	12,800	13' 9"	22' 9"
CX130D	102	30,400	.32-1.12	20,200	18' 3"	26' 10"
CX145C SR	100	31,967	.43-1.02	20,200	19' 8"	28' 2"
CX160D	112	34,400	.32-1.12	25,200	19' 11"	30' 4"
CX210D	160	48,973	.55-1.76	31,923	21'	31' 11"
CX235C SR	160	56,907	.55-1.53	31,920	21' 8"	31' 7"
CX250D	177	56,909	.68-1.90	36,419	22' 8"	33' 2"
CX250D LR	177	63,523	1.38-1.77	17,310	47' 9"	59' 9"
CX300D	207	67,271	.72-2.42	39,342	23' 4"	34' 5"
CX350D	268	82,483	.88-2.72	51,639	24' 1"	36'
CX470C	362	105,300	2.03-3.37	55,530	25' 4"	38' 7"
CX700B	463	153,400	2.47-5.91	65,194	27' 7"	42' 4"
CX800B	532	178,575	2.47-5.91	74,187	28' 6"	45' 5"



Gradall

Discovery Series excavators by Gradall are designed to meet governments' and contractors' needs for productivity, mobility and versatility on tight budgets. Two-wheel- and four-wheel-drive models combine the benefits of a full-tilting, telescoping boom with the reliable mobility of a Freightliner truck chassis. The units are specially designed to handle projects addressed by county and state governments, including grading, culvert replacement, landscaping, mowing, vegetation control, removal and replacement of curbs and more.

Indicate 152 on inquiry card

Gradall						
Model	Net HP	Operating Weight (lbs.)	Std. Bucket (cu. yds.)	Breakout Force (lbs.)	Max. Dig Depth	Max. Reach at Ground Level
D152*	220	32,200	.5	11,400	13' 5"	25' 7"
D154*	250	34,500	.5	11,400	13' 5"	25'
XL 3100 V*	215	40,930	.88	17,990	18' 4"	27' 3"
XL 4100 V*	262	49,684	1.13	24,900	20' 3"	30' 3"
XL 5100 V*	283	57,670	1.6	24,900	24' 5"	33' 9"
XL 3200 V	173	39,240	.88	19,300	19' 2"	27' 5"
XL 4200 V	173	46,862	1.13	25,405	22'	30' 6"
XL 5200 V	173	54,452	1.6	25,405	25' 4"	33' 11"
XL 3300 V*	173	39,295	.88	19,300	18' 5"	27' 3"
XL 4300 V*	173	43,580	1.13	25,405	21' 3"	30' 4"
XL 5300 V*	173	51,216	1.6	25,405	24' 7"	33' 10"

*Wheeled

Gehl

Performing OEM-recommended maintenance is critical to assure your equipment's efficient and continuous operation. The Gehl Tier 4-compliant excavators have been designed to make that task quick and easy through the use of tool-free access panels, remote grease points and easily accessible filters. In addition, the new LCD monitor allows owners to set programmable maintenance reminders, allowing them to adjust the interval between maintenance procedures.

Indicate 153 on inquiry card



Model	Net HP	Operating Weight (lbs.)	Std. Bucket (cu. yds.)	Breakout Force (lbs.)	Max. Dig Depth	Max. Reach at Ground Level
Z17 GEN:2	14.5	3,836	.06	3,417	7' 2.6"	12' 2.1"
Z25	19.7	6,217	.16	4,079	9' 8"	15' 9"
Z35 GEN:2	23.9	8,214	.16	5,643	10' 8"	17' 3.5"
Z45 GEN:2	37.7	10,814	.24	6,497	11' 7.8"	18' 10"
Z55	44.9	12,247	.3	9,419	12' 9.5"	20' 1.7"
Z80 GEN:2	55.7	18,136	.44	14,286	14' 4.4"	23' 5.1"



Wacker Neuson

Wacker Neuson's newest excavators are powered by Tier 4 Final engines that produce optimal power and offer 20% fuel savings. In addition, the new three-point bucket linkage system with the 200° expanded angle of rotation offers maximum breakout force. This unique kinematic linkage system and optimal angle of rotation provide more power for digging in tough conditions; can dig deeper, especially along vertical walls; and can keep the load more secure in the bucket before dumping.

Indicate 155 on inquiry card

Model	Net HP	Operating Weight (lbs.)	Std. Bucket (cu. ft.)	Breakout Force (lbs.)	Max. Dig Depth	Max. Reach at Ground Level
803	12.8	2,399	.36-.80	2,001	5' 9"	10'
803 Dual power	12.8	2,399	.36-.80	2,001	5' 9"	10'
1404	17.9	3,483/3,682 ^a	.87-1.8	3,440	7' 4"	12'
EZ17	17.2	3,803	.87-1.8	4,226	8' 2"	13' 2"
ET20	17.2	4,105/4,341 ^a	.87-1.8	4,204	8' 10"	13' 11"
EZ28	20.4	6,085/6,283 ^a	2.13-5.25	5,058	8' 4"	14' 8"
3503	39.9	8,003/8,219 ^a	2.13-5.25	6,812	10' 7"	17'
EZ38	24.4	8,331/8,488 ^a	2.13-5.25	5,778	10' 2"	17'
EZ53	49.4	11,1033/11,354 ^a	3.0-9.8	8,656	11' 6"	19' 3"
ET65	52.9	13,399 ^b	3.0-9.8	11,398	11' 7"	20'
ET90	73.7	19,202 ^b	3.5-13	16,636	14' 2"	23' 7"
EW65**	53.9	14,882 ^b	3.0-9.8	11,398	11' 7"	20'
EW100**	73.7	21,351 ^b	3.5-13	11,308	13' 1"	24'

^a Canopy/cab ^b Cab only * With standard dipper stick ** Wheeled



Bobcat

Bobcat compact excavators allow access to all major service areas using the swing-open tailgate and side access hood. Filters, fluid checks, air cleaner, battery and other maintenance points are simple to access, making it easy to make maintenance part of your routine. Side panels are also simply removed for additional engine access.

Indicate 154 on inquiry card

Model	Net HP	Operating Weight (lbs.)	Std. Bucket (cu. ft.)	Breakout Force (lbs.)	Max. Dig Depth	Max. Reach at Ground Level
418	10.2	2,593	.54	1,865	6'	10' 2"
E20	13.9	4,306	1.1	4,684	8' 6"	14'
E26	24.8	5,763	2.9	4,991	8' 10"	15' 4"
E32	33.5	7,183	3.9	6,968	10' 3"	16' 4"
E32i	24.8	7,183	3.9	6,968	10' 3"	16' 4"
E35	33.5	7,468	3.9	6,968	10' 3"	17' 2"
E35i	24.8	7,468	3.9	6,968	10' 3"	17' 2"
E42	42.7	9,246	3.9	9,183	10' 6"	17' 3"
E45	42.7	10,077	5.9	7,650	10' 10"	18' 7"
E50	49.8	10,677	5.9	8,977	11' 7"	19' 6"
E55	49.8	12,313	5.9	8,977	12' 11"	20'
E63	59.4	13,779	5.9	9,731	13' 6"	20' 5"
E85	59.4	18,960	9.5	14,509	15' 6"	23' 11"

JCB

Technology has made it possible to dramatically increase service intervals on JCB excavators. On compact models, a new graphite-based pin and bush design delivers 500-hour greasing intervals (a self-lubricating system). The greasing interval increases to 1,000 hours on full-sized units. All models feature Tier 4 Final engines that do not require a DPF, further reducing maintenance time while increasing uptime and improving fuel efficiency. The LiveLink telematics system allows owners and operators to monitor machine performance, service intervals, fuel consumption and location.

Indicate 156 on inquiry card



Model	Net HP	Operating Weight (lbs.)	Std. Bucket (cu. ft.)	Breakout Force (lbs.)	Max. Dig Depth	Max. Reach at Ground Level
8018 CTS	19.7	4,017	1.47*	3,642	9.3'	14.7'
8029 CTS	24.7	6,321	1.91*	5,170	10.1'	15.4'
8035 ZTS	31.6	8,049	2.62*	7,193	11.6'	17.5'
48Z-1	48	10,564	3.5*	8,543	11.11'	18.8'
55Z-1	48	11,860	4.6*	9,442	12.7'	19.8'
57C-1	48	12,088	4.6*	9,442	13.4'	20.1'
67C-1	55	14,903	8.75*	10,611	13.4'	21.4'
85Z-1	64.4	18,142	8.75*	12,837	12.2'	22.6'
86C-1	64.4	18,464	8.75*	12,837	14.1'	24.3'
90Z-1	73.8	18,975	10.0*	12,837	13.7'	24.9'
100C-1	73.8	21,458	10.0*	16,231	14.11'	24.9'
JS145	109	34,392	.57-1.2	20,682	18.2'	27.4'
JS160	125	40,644	.68-1.36	26,100	19'	27.5'
JS190	125	45,108	.68-1.36	26,100	21.8'	29.10'
JS220LC	173	46,615	.77-1.77	32,077	22	31.8'
JS220MONO	173	46,615	.77-1.77	32,077	22	31.8'

* Cubic feet

2016 EXCAVATOR SPEC GUIDE

LBX Co.

The Link-Belt X4 Series is driven by an Isuzu Tier 4 Final-compliant engine that utilizes a cooled EGR system to lower NOx pollutants while maintaining fuel efficiency and engine horsepower. The selective catalytic reduction (SCR) system works downstream from the engine to remove pollutants to near-zero levels. It is designed for minimal maintenance and minimal diesel exhaust fluid consumption. The Ulti-flow hydraulic system features electronically controlled pumps that provide maximum flow and torque to improve maneuverability and increase digging power while minimizing any hydraulic loss. Proportional controls are optional with all of the factory auxiliary hydraulic systems offered.

Indicate 157 on inquiry card



LBX Co.

Model	Net HP	Operating Weight (lbs.)	Std. Bucket (cu. yds.)	Breakout Force (lbs.)	Max. Dig Depth	Max. Reach at Ground Level
130X3	100	28,660	.42-.98	21,360	18' 2"	26' 10"
130X4 (T4F)	102	29,100	.42-.98	21,360	18' 2"	26' 10"
145X3 Spin Ace w/Blade	100	33,069	.42-.98	21,360	18' 1"	26' 8"
160X3	124	37,919	.50-1.14	26,530	19' 11"	29' 1"
160X4 (T4F)	112	38,400	.50-1.14	26,500	19' 11"	29' 1"
210X3	160	47,840	.58-1.75	34,170	21' 10"	31' 11"
210X4 (T4F)	160	48,900	.58-1.75	34,600	21' 10"	31' 11"
210X4 Long Front	160	51,900	.50-.98	14,600	39' 5"	50' 10"
250X3	177	55,336	.76-2.43	39,120	22' 8"	33' 2"
235X3 Spin Ace w/Blade	160	56,879	.61-1.75	34,170	21' 10"	31' 9"
250X4 (T4F)	177	56,900	.76-2.43	39,570	22' 8"	33' 2"
250X4 Long Front	177	63,600	.50-.95	17,300	47' 9"	59' 9"
300X3	207	65,918	.76-2.43	42,760	23' 4"	34' 5"
300X4 (T4F)	207	67,000	.76-2.43	42,780	23' 4"	34' 5"
350X3	266	80,028	1.08-2.93	55,843	24' 1"	36'
350X4 (T4F)	268	82,400	1.08-2.93	56,160	24' 1"	36'
470X3 FS	362	108,467	1.58-4.05	60,700	25' 4"	38' 7"
470X3 ME FS	362	111,113	1.58-4.05	70,370	21' 4"	34' 8"
470X3 ES	362	111,554	1.58-4.05	60,700	24' 10"	38' 6"
470X3 ME ES	362	114,199	1.58-4.05	70,370	20' 10"	34' 6"
490X4 FF (T4F)	362	109,800	1.37-4.04	55,500	25' 4"	38' 7"
490X4 EF (T4F)	362	112,900	1.37-4.04	55,500	24' 10"	38' 5"
700 X2	463	153,442	1.78-4.89	71,260	27' 7"	42' 4"
700 X2 ME	463	153,662	1.78-4.89	82,060	23' 7"	37' 7"
800 X2	532	178,574	2.47-5.42	81,160	28' 6"	45' 5"
800 X2 ME	532	178,795	2.47-5.91	105,660	23' 1"	39' 4"
75X3 MSR (T4F)	55	17,300	.24-.71	12,800	13' 7"	20' 7"
75 MSR (T4i) Spin Ace	54	17,461	.24-.71	12,790	13' 7"	21'
75X3 MSR Offset Boom (T4F)	55	18,100	.24-.45	12,800	13' 11"	20' 10"
75 MSR Offset Boom	54	18,188	.24-.45	12,790	13' 9"	20' 10"
80 Spin Ace Swing Boom	54	18,585	.24-.71	12,790	13' 9"	22' 7"
80X3 MSR Swing Boom	55	18,800	.24-.71	12,800	13' 9"	22' 9"

FS = Fixed Sideframes ES = Expandable Sideframes FF = Fixed Frame EF = Expandable Frame

New Holland

New Holland is including a new Integrated Noise and Dust Reduction (iNDR) cooling system into compact excavators. The system reduces noise by up to 9 dB, a noticeable difference to the operator. The filter located in the front of the radiator is easy to remove and clean with compressed air and reduces the need for direct cleaning of the radiator. This technology helps improve operating efficiency and productivity by making the operator more comfortable due to the noise reduction.

Indicate 159 on inquiry card

New Holland

Model	Net HP	Operating Weight (lbs.)	Std. Bucket (cu. ft.)	Breakout Force (lbs.)	Max. Dig Depth	Max. Reach at Ground Level
E30B	23.1	6,600	2.2	5,418	10' 3"	17' 6"
E35B	23.1	7,700	2.2	5,418	12'	18'
E55BX	37.4	12,100	2.2	6,992	12' 9"	20'



Hyundai

The Hyundai HX series excavators feature an improved hydraulic system with new options, including boom float mode for better control, and fine swing mode for improved control when swinging heavy loads. These machines deliver faster cycle times than previous models, computer-aided power optimization based on load demand and selectable pump flow when working with various attachments. The standard multifunction hydraulic piping kit and controls allow greater attachment versatility.

Indicate 158 on inquiry card



Hyundai Construction Equipment Americas Inc.

Model	Net HP	Operating Weight (lbs.)	Std. Bucket (cu. yds.)	Breakout Force (lbs.)	Max. Dig Depth	Max. Reach at Ground Level
R17Z-9A	16.4	3,750	.05	3,490	7' 3"	12' 6"
R25Z-9AK	24.9	5,360	.09	4,740	7' 11"	14' 3"
R35Z-9A	24.4	8,140	.14	6,900	10' 3"	17' 1"
R55-9A	66.9	12,460	.24	8,490	12' 6"	19' 9"
R60CR-9A	64.7	13,010	.24	9,190	11' 9"	24' 11"
R80CR-9A	66.9	18,190	.25	12,570	13' 7"	22' 5"
HX140L	124	31,970	.76	24,890	19' 10"	28' 4"
HX145LCR	124	33,420	.68	24,890	19' 1"	28' 4"
HX160L	137	41,340	.92	30,160	19' 2"	29' 4"
HX180L	137	42,340	.99	26,330	21' 6"	30' 6"
HX220L	182.6	50,263	1.2	37,100	24' 10"	35' 4"
HX235LCR	182.6	54,140	1.05	37,100	22'	32'
HX260L	190	58,640	1.41	43,560	24' 9"	35' 11"
HX300L	242	67,462	1.66	46,910	26' 7"	36' 10"
HX330L	284	78,830	1.88	51,700	24' 2"	38' 10"
HX380L	359	86,900	2.12	56,040	27'	38' 1"
HX480L	444	112,520	2.88	62,520	27'	40' 9"
HX520L	444	116,520	2.88	62,520	28'	40' 9"
HW140*	157	32,800	.76	24,890	18' 10"	28' 2"
HW210*	183	46,960	1.05	37,100	20' 11"	32'

*Wheeled

John Deere

G-Series excavators over 6 tons are equipped with John Deere WorkSight. This suite of solutions brings together machines, technology and the dealer to make a fleet manager's job easier. Customers can turn data into insights to optimize the machines, uptime, jobsites and their bottom line with five key technologies: JDLink Telematics, Machine Health Prognostics, Remote Diagnostics and Programming, Payload Weighing and Grade Control.

Indicate 160 on inquiry card



John Deere

Model	Net HP	Operating Weight (lbs.)	Std. Bucket (cu. yds.)	Breakout Force (lbs.)	Max. Dig Depth	Max. Reach at Ground Level
17G	14.5	3,790	.05	3,597	7' 2"	12' 6"
26G	20	6,110	.048-.16	4,994	8' 6"	15' 2"
35G	23.3	7,760	.048-.21	6,085	10'	17' 1"
50G	35.9	10,560	.078-.31	8,267	11' 7"	19' 7"
60G	53	13,547	.122-.46	9,237	12' 4"	20' 5"
75G	56.9	18,221	.41	10,476	15' 1"	22' 2"
85G	56.9	19,564	.41	10,476	14' 10"	24' 9"
130G	98	31,604	.65	21,480	19' 9"	28' 5"
135G	97	30,617	.65	21,480	19' 7"	28' 7"
160G LC	121	39,526	.78	26,665	21' 4"	30' 1"
180G LC	128	45,170	.78	28,244	23' 2"	32' 1"
190G W*	159	44,530	.92	27,651	19' 2"	33' 9"
210G LC	159	51,940	1.19	35,520	21' 11"	32'
230G W*	159	52,030	.92	35,520	20' 8"	31' 5"
245G LC	159	56,167	1.04	35,522	21' 5"	32' 6"
250G LC	188	57,800	1.38	42,489	25'	35' 3"
300G LC	223	68,674	1.38	45,411	25' 10"	36' 5"
350G LC	271	78,550	2.3	55,303	26' 10"	38' 3"
380G LC	271	83,992	1.5-2.4	55,303	26' 10"	38' 3"
470G LC	367	108,952	3.06	64,295	27' 2"	40' 3"
670G LC	463	158,045	4.04	72,838	30'	44' 8"
870G LC	532	193,255	4.57	89,699	31' 5"	48'

*Wheeled

2016 EXCAVATOR SPEC GUIDE

Terex

Terex excavators are engineered with a dual-circuit hydraulic system with load-independent flow distribution (LUDV) to allow all functions to be controlled simultaneously and independently of each other. The system has been sensitively tuned to control all functions at all engine speeds, independently of the load. The units' structural design also complements the efficiency of the hydraulic system. A balanced machine enables operators to quickly change operation speed without the unit bouncing around.

Indicate 166 on inquiry card



Terex Construction Americas

Model	Net HP	Operating Weight (lbs.)	Std. Bucket (cu. ft.)	Breakout Force (lbs.)	Max. Dig Depth	Max. Reach at Grade
TC16-2	14	3,635	.75-3.2		8' 1"	13'
TC22-2	16	4,430	.75-3.2		9'	14' 4"
TC35-2	31	7,780	1.91-6.75		11' 7"	18' 3"
TC37	30	8,050	1.91-6.75		10' 6"	18' 1"
TC48	40	10,495	2.4-8.2		12' 2"	19' 8"
TC50	36	11,070	2.4-8.2		12' 2"	20' 4"
TC60	44	12,460	2.4-8.2		12' 2"	20' 4"
TC85	85	18,077	3.07-10.77		14' 10"	25' 4"
TC125	116	25,350	5.3-16.8		16' 1"	28' 5"

Yanmar America

The Yanmar ViO series true zero tailswing excavators are designed to create optimal access to all maintenance items while maintaining a compact overall design. They feature a full open rear bonnet, removable panels in the front of the machine and a lift-up seat. All daily service checks are easily accessible including oil, coolant, fuel and hydraulic fluid. The key components of the hydraulic system can be accessed under the seat and front panels and most machine repairs can be made with minimal disassembly.

Indicate 168 on inquiry card



Yanmar America

Model	Net HP	Operating Weight (lbs.)	Std. Bucket (cu. yds.)	Breakout Force (lbs.)	Max. Dig Depth	Max. Reach at Ground Level
SV08-1B	10.3	2,348	.029	2,360	5' 4"	8' 11"
Vi017-A	14.5	3,836	.065	3,418	7' 7"	12' 2"
Vi025-6A	20.4	5,919	.105	5,516	10' 4"	15' 9"
Vi035-6A	24.4	7,905	.149	7,216	11' 3"	17' 3"
Vi045-6A	39	10,373	.183	9,158	12' 3"	18' 10"
Vi055-6A	47.6	11,806	.209	10,347	13' 6"	20' 2"
Vi080-1A	56.9	18,136	.366	14,275	15' 4"	23' 5"
SV100-2A	73	21,550	.4	17,087	15' 9"	24' 3"

Rhino Equipment

Rhino excavators have a simple engine speed control that regulates the engine's rpms by looking at feedback from control levers and other variables. As a result, the engine only works when it has to, enabling the machine to save fuel and work more efficiently. The computer has different work modes in order for the arm to receive the exact hydraulic power needed to perform the task.

Indicate 169 on inquiry card



Rhino Equipment

Model	Net HP	Operating Weight (lbs.)	Std. Bucket (cu. yds.)	Breakout Force (lbs.)	Max. Dig Depth	Max. Reach at Ground Level
REX18	25	3,880	.05	2,563	6.5'	11.9'
REX35	34	9,259	.2	5,328	10.1'	17.8'
REX60W*	60	13,184	.3	13,039	9.4'	19'
REX70	60	14,991	.4	11,847	13.2'	20.3'
REX74CW**	60	16,314	.3	11,847	9.8'	19'
REX75W*	68	16,535	.46	13,489	11.3'	18.6'
REX130	115	28,660	.7	17,985	18'	26.8'
REX210	150	45,415	1.3	25,628	22.7'	32.8'
REX330	252	72,753	1.9	55,753	24.2'	35.8'
REX360	257	76,059	2.1	46,760	24.2'	35.8'
REX450	337	100,972	2.7	45,861	25.6'	38.8'
REX700	475	154,324	5.2	58,900	23.6'	37.5'

*Wheeled **Tracks/wheeled



Komatsu America

Komatsu's PC210LCi-10 excavator with semi-automatic machine control changed the trajectory of the market by becoming the first to automate control of digging depth. The PC360LCi and PC490LCi are the two largest 3D semi-automatic excavators available. Production increases of up to 63% over traditional excavators are now possible by limiting over excavation and automating finish grading. This means no grade checkers, no stakes and fewer passes.

Indicate 167 on inquiry card

Komatsu America

Model	Net HP	Operating Weight (lbs.)	Std. Bucket (cu. yds.)*	Bucket Digging Force (lbs.)	Max. Dig Depth	Max. Reach at Ground Level
PC30MR-5	24.4	7,993	.04-.14	6,631	9'	16' 1"
PC35MR-5	24.4	8,324	.06-.12	6,721	11' 4"	18' 1"
PC45MR-5	38.2	10,975	.11-.36	7,630	12'	19' 4"
PC55MR-5	38.2	11,581	.11-.36	8,770	12' 6"	19' 11"
PC78US-10	65.5	17,747	.12-.44	13,780	15'	22' 3"
PC88MR-10	65.5	18,558	.12-.44	13,780	15' 3"	23' 3"
HB215LC-1	139	48,175	.66-1.57	31,080	21' 9"	31' 10"
PC138USLC-11	97.2	34,288	.34-1.00	20,950	19' 4"	28' 3"
PC170LC-10 Heavy Spec	115	41,600	.48-1.24	24,504	20' 6"	29' 9"
PC170LC-10 Std. Spec	115	38,100	.48-1.24	24,504	20' 6"	29' 9"
PC210LC-10	158	52,036	.66-1.57	33,510	21' 9"	31' 10"
PC210LC-11	165	53,045	.66-1.57	33,530	21' 9"	31' 10"
PC228USLC-10	158	55,335	.66-1.57	29,762	21' 9"	31' 10"
PC240LC-11	177	56,380	.76-1.85	34,170	22' 8"	32' 10"
PC290LC-11	196	71,540	.76-2.13	39,460	22' 8"	34' 4"
PC360LC-11	257	80,320	.89-2.56	44,970	24' 3"	35' 10"
PC390LC-11	257	89,940	.89-2.91	44,970	23' 10"	35' 8"
PC490LC-11	359	107,850	1.47-4.15	53,790	25' 5"	38' 9"
PC490LC-11 Var. Gauge	359	110,220	1.47-4.15	53,790	25' 5"	38' 9"
PC490LC-11	359	107,850	1.47-4.15	53,790	25' 5"	38' 9"
PC650LC-8	429	143,411	2.05-4.98	64,150	27' 10"	42'
PC650LC-8 SE	429	146,390	2.05-4.98	70,040	23' 2"	37' 1"
PC800LC-8	487	188,670	2.23-6.0	72,750	28' 3"	44' 2"
PC800LC-8 SD	487	188,670	2.23-6.0	77,600	28' 3"	44' 2"
PC800LC-8 SE	487	188,670	2.23-7.8	96,120	23' 5"	39' 2"
PC1250-8	672	239,880	4.4-6.8	94,800	30' 8"	49' 3"
PC1250LC-8	672	250,154	4.4-6.8	94,800	30' 8"	49' 3"
PC1250SP-8	672	244,050	8.8	112,900	25' 11"	44' 10"
PC2000-8	956	440,920	15.7-17.9	140,600	30' 4"	50' 3"

Sany America

Sany America has developed a telematics solution that allows owners and fleet managers to monitor and manage their heavy equipment in North America. With SanyLIVE, customers receive real-time diagnostic and condition alerts, notifying them of any upcoming scheduled maintenance, equipment service needs or even insights to the possibility of future component failures. The system comes pre-installed with a three-year subscription included.

Indicate 170 on inquiry card



Sany America

Model	Net HP	Operating Weight (lbs.)	Std. Bucket (cu. yds.)	Breakout Force (lbs.)	Max. Dig Depth	Max. Reach at Ground Level
SY16C T4F	15	4,023		3,417	7' 2"	13' 1"
SY35U T4F	24.4	8,499		6,834	10' 2"	17' 11"
SY75C T4i	54.3	16,050		11,465	14' 7"	21' 4"
SY135C T3	98	30,424		20,682	18' 1"	27' 2"
SY215CLC T3	155	51,193		28,551	21' 8"	33' 10"
SY215LC T4F	164	51,918		28,551	21' 8"	33' 10"
SY235CLC T3	190	55,589		39,340	22' 4"	33' 4"
SY235CLR T3	190	60,960	0.8		46' 7"	59' 1"
SY365C T4F	275	79,860		43,163	24' 2"	36' 5"

