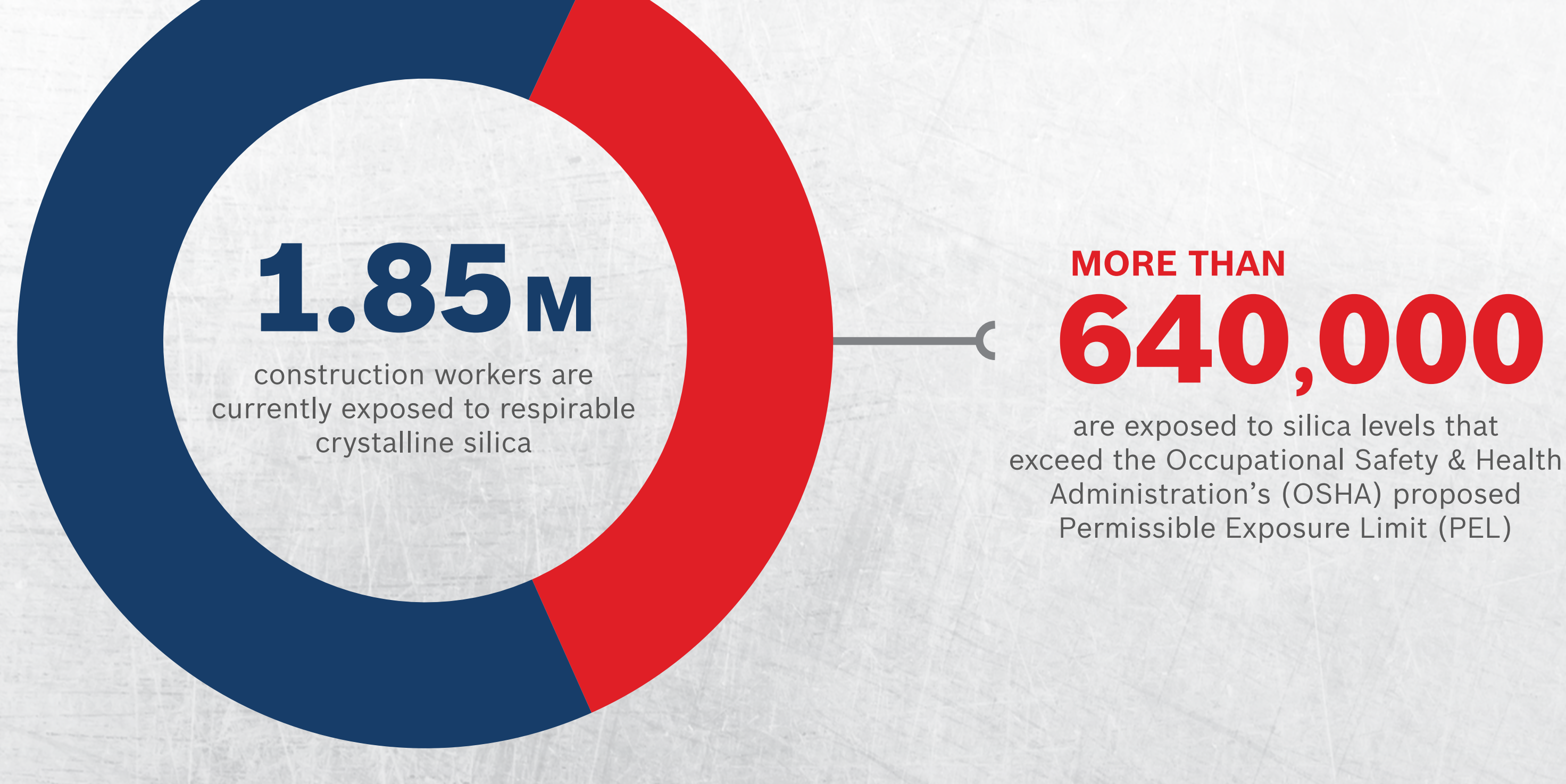


BREATHE EASIER ON THE JOB

Dust exposure from construction-related tasks can pose several health problems. Following the right procedures and using the right tools can significantly help to minimize your risk.

Let's dive into the facts.*



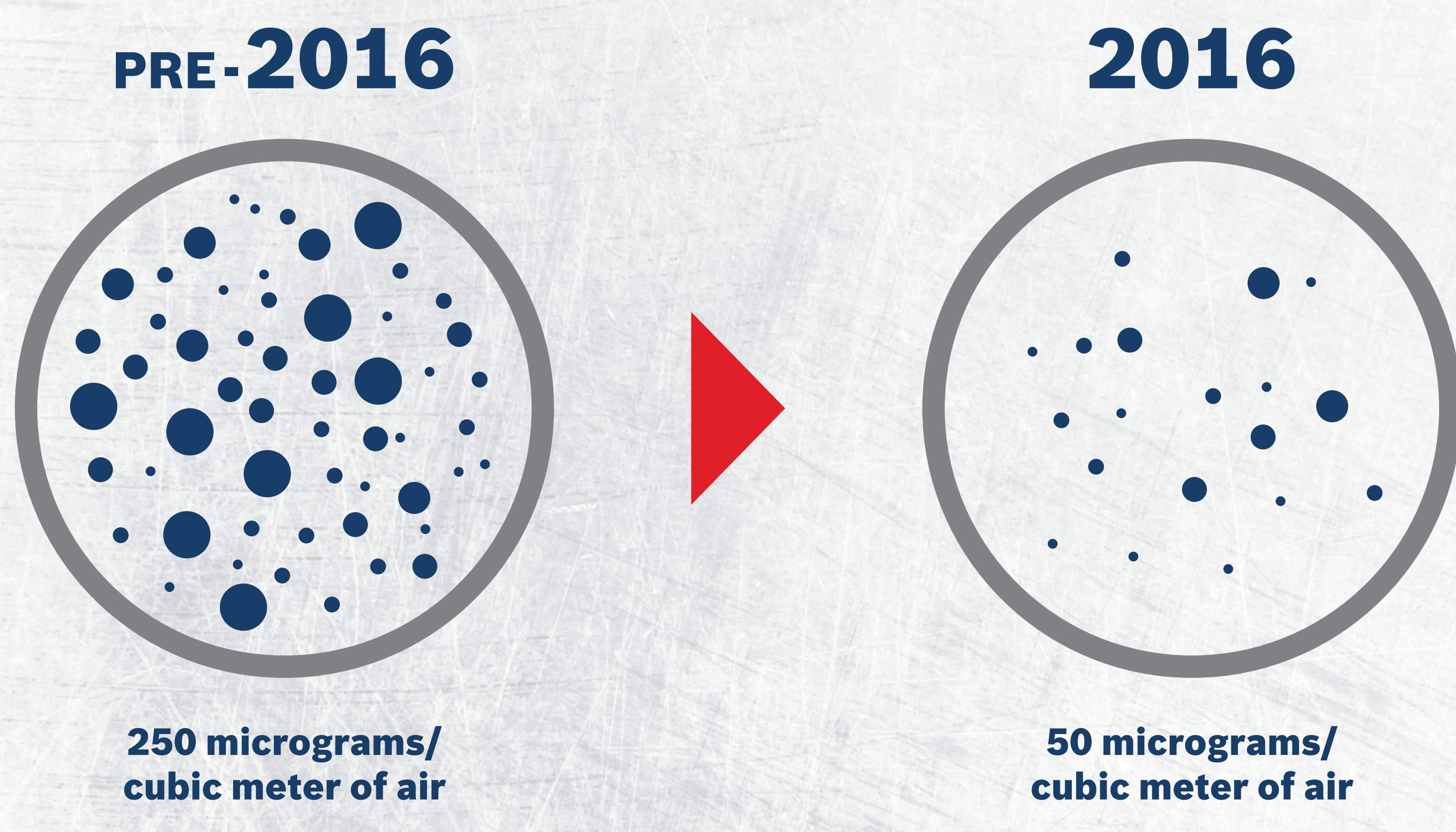
WHAT IS RESPIRABLE CRYSTALLINE SILICA?

Particles small enough to be breathable that contain crystalline silica (quartz, cristobalite or tridymite). They are created during processes involving the chipping, cutting, drilling or grinding of materials that contain any crystalline silica.



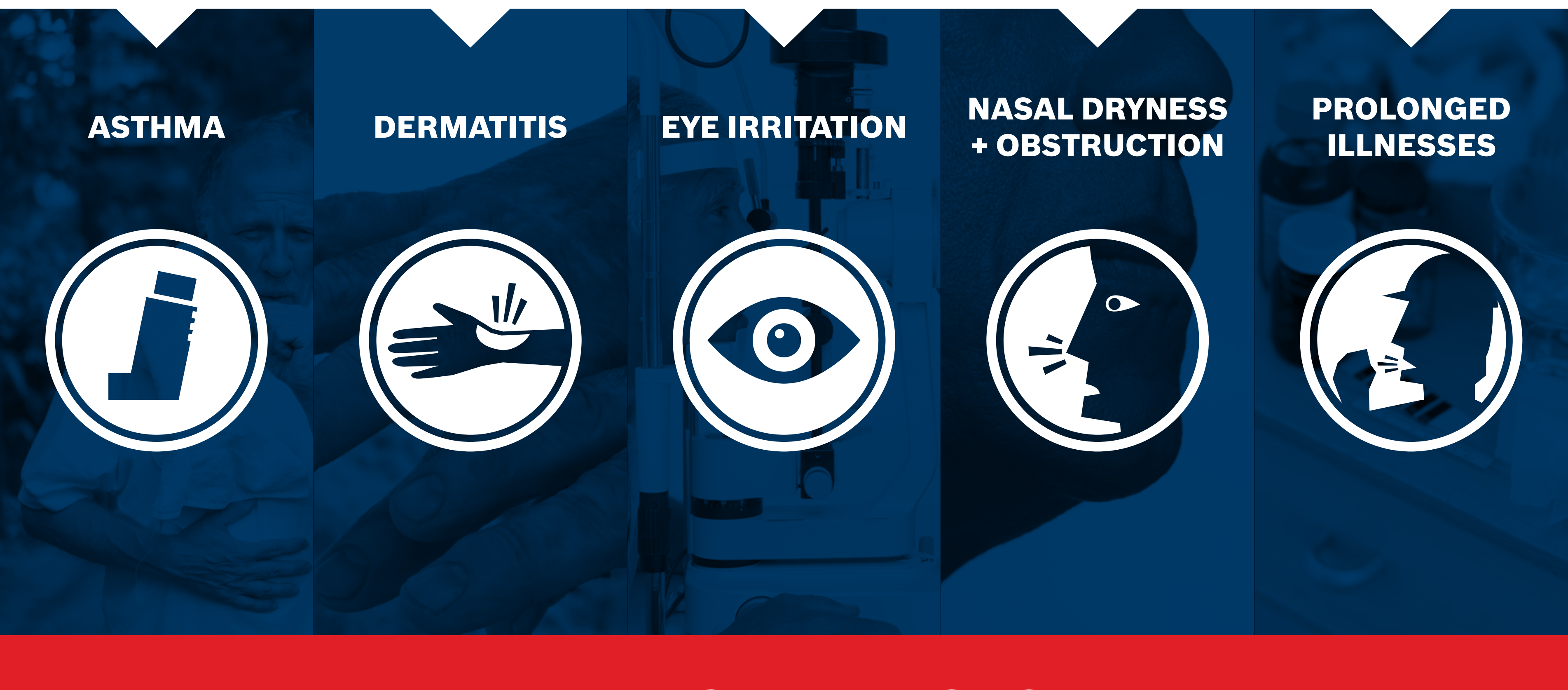
OSHA IS CRACKING DOWN

In 2016, OSHA reduced the PEL of respirable crystalline silica averaged over an 8-hour shift by 5X.



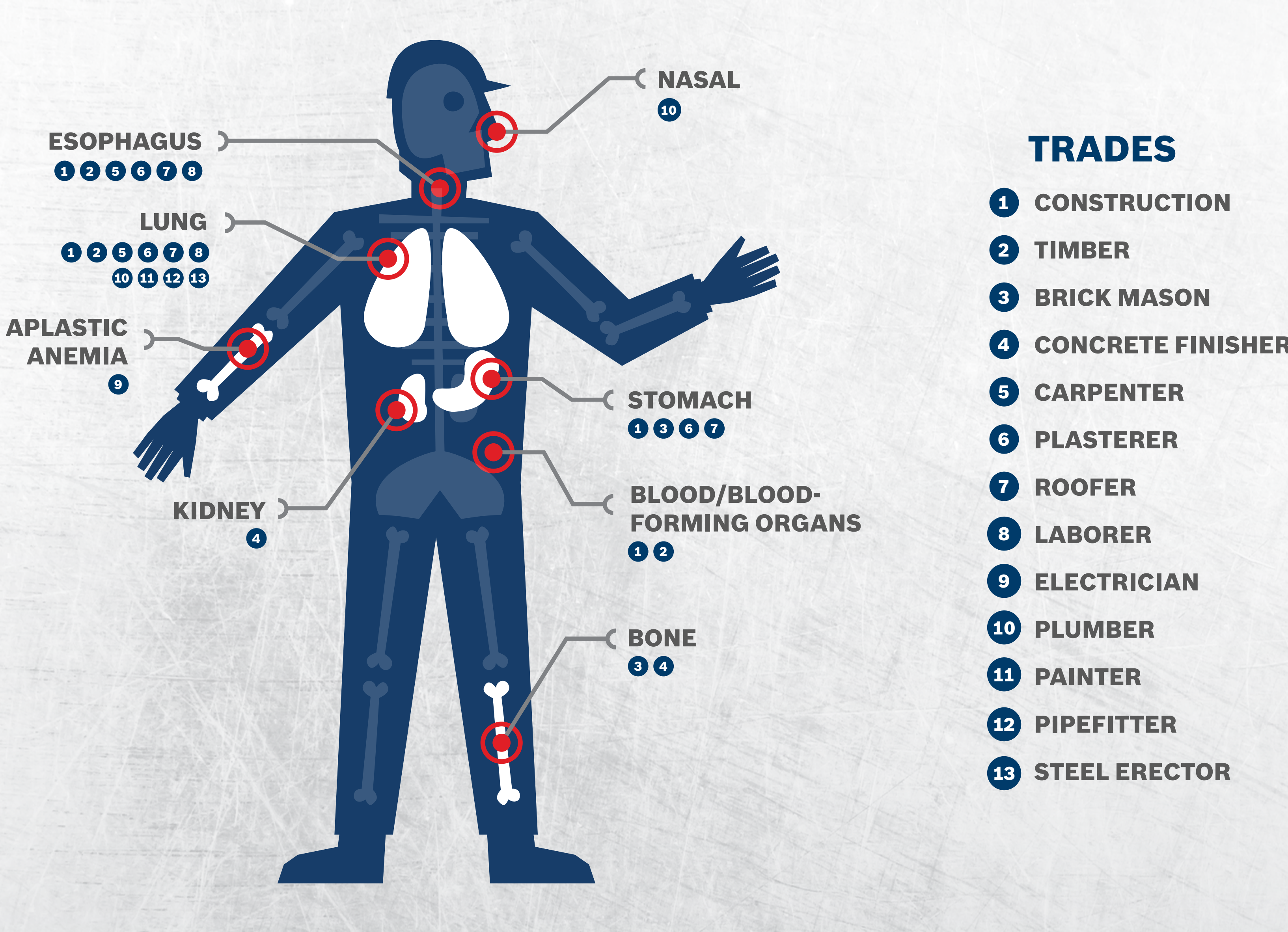
WOOD DUST ALSO CAUSES PROBLEMS

When a worker becomes repeatedly exposed to wood dust, he or she can have allergic reactions that affect the skin, respiratory system and more. **Common health problems include:**



ARE YOU AT RISK?

Prolonged exposure to dust has been linked to several types of cancer. Workers in different trades face increased risks of specific illnesses.



CAUSES OF DUST EXPOSURE



BUT IT'S NOT ALL BAD

WORKERS CAN HELP PREVENT EXPOSURE TO DUST AND OTHER PARTICLES BY FOLLOWING THESE SIMPLE GUIDELINES:



Wear protective respirators and dust masks during construction tasks

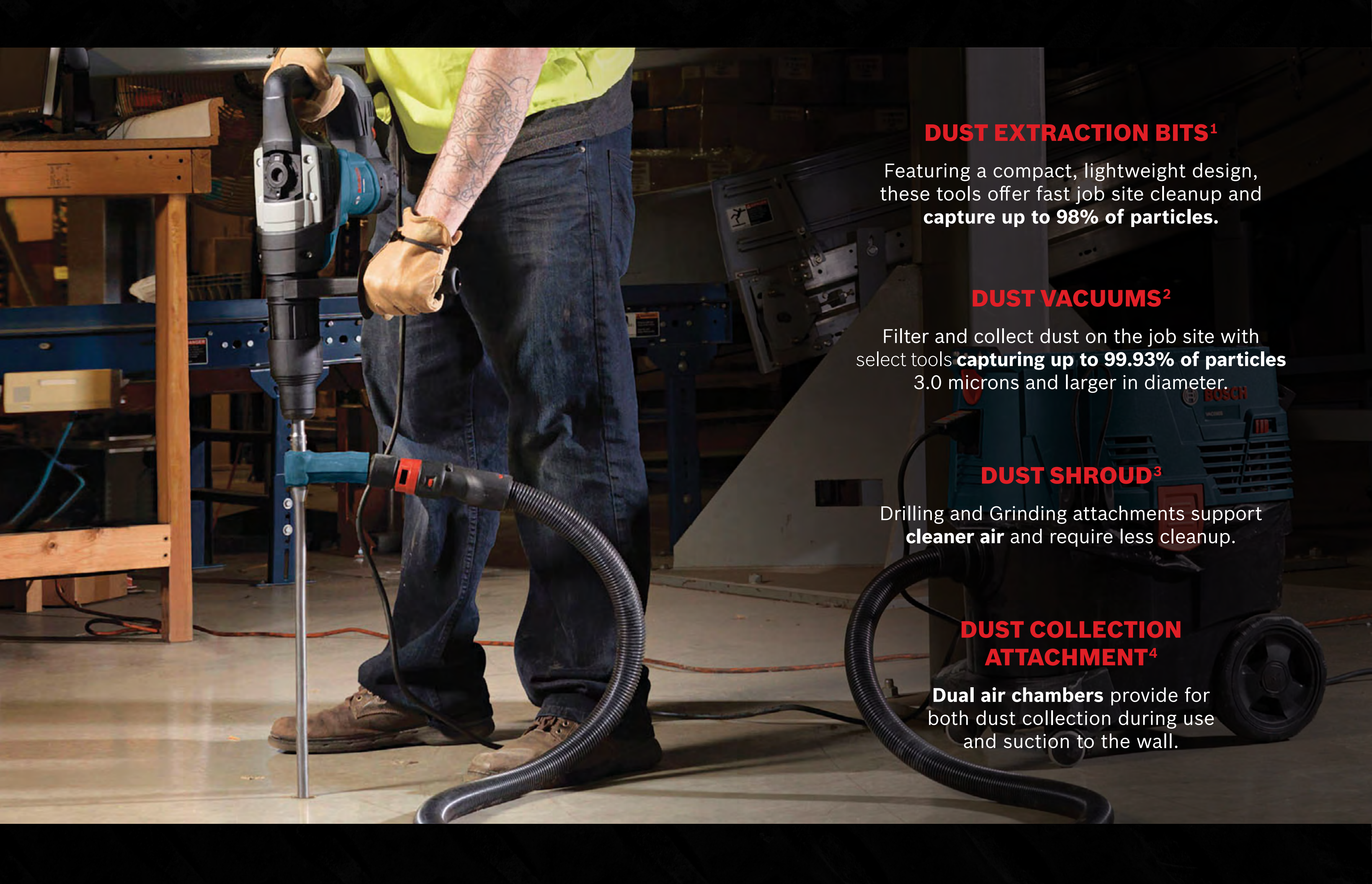
Do not eat, drink or use tobacco products in dusty areas

Wash hands and face before eating, drinking or using tobacco products outside of dusty areas

Park cars where they will not be contaminated with silica, lead, wood dust, etc.

THE RIGHT TOOLS CAN HELP EVEN MORE

DUST EXTRACTION TOOLS AND ACCESSORIES CAN SIGNIFICANTLY HELP TO REDUCE DUST EXPOSURE.



DUST EXTRACTION BITS¹
Featuring a compact, lightweight design, these tools offer fast job site cleanup and capture up to 98% of particles.

DUST VACUUMS²
Filter and collect dust on the job site with select tools capturing up to 99.93% of particles 3.0 microns and larger in diameter.

DUST SHROUD³
Drilling and Grinding attachments support cleaner air and require less cleanup.

DUST COLLECTION ATTACHMENT⁴
Dual air chambers provide for both dust collection during use and suction to the wall.

*Sources:
https://www.osha.gov/SITC/etools/woodworking/health_wooddust.html
<https://www.osha.gov/SITC/etools/sawmills/dust.html>
<https://www.osha.gov/silica>
https://www.osha.gov/silica/factsheets/OSHA_FS-3681_Silica_Construction.v2.html
<http://www.cdc.gov/niosh/docs/96-112/>
<http://www.bwint.org/pdfs/cancerinBWI.pdf>

1. Bosch Speed Clean™ Dust Extraction Bits are a key part of the Dust Extraction System. More info is available at www.boschtools.com/speedclean.
2. Dust Extraction Vacuums - Model 3831B-SPB with Hepa filter specs listed above. Additional vacuum options available at <http://bit.ly/15CijbP>.
3. Dust Shrouds like 18SG-5E for grinders are available at <http://bit.ly/21bzqCP>.
4. Dust Collection Attachments like HDC250 for drills are available at <http://bit.ly/21bzqCP>.