

KOMATSU®

D155AXi-8

Tier 4 Final Engine

**RADIO
CONTROL**

CRAWLER DOZER



D155i

intelligent™
MACHINE CONTROL

Photo may include optional equipment.

NET HORSEPOWER

354 HP @ 1900 rpm
264 kW @ 1900 rpm

OPERATING WEIGHT

102,060 lb
46,294 kg

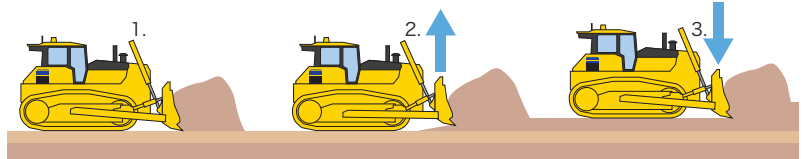
BLADE CAPACITY

12.3 yd³ 9.4 m³ SIGMADOZER
12.3 yd³ 9.4 m³ Semi-U

Remove The Operator, Keep The Productivity

Maintaining high productivity while manually dozing with radio control can be difficult without the sensations that come from sitting in the cab. Komatsu's intelligent Machine Control technology with radio control option limits this productivity loss by automatically controlling blade load to optimum levels and minimizing shoe slip.

1. Blade moves to target surface until load reaches a preset level.
2. The blade automatically raises to minimize track slip.
3. Should the load decrease, blade will lower to re-load blade to an optimum level.



Radio Control Features

- Line-of-sight remote control up to 100m away, without operator in cab
- Key machine functions controlled on comfortable remote transmitter
- Machine status indication via cab-top lights

Intelligent Features

- Automatic blade control, first to last pass, rough to finish grade
- 3D GNSS technology allows dozing of simple planes to complex surfaces
- Factory installed: Base machine, radio control, machine control technology all from Komatsu

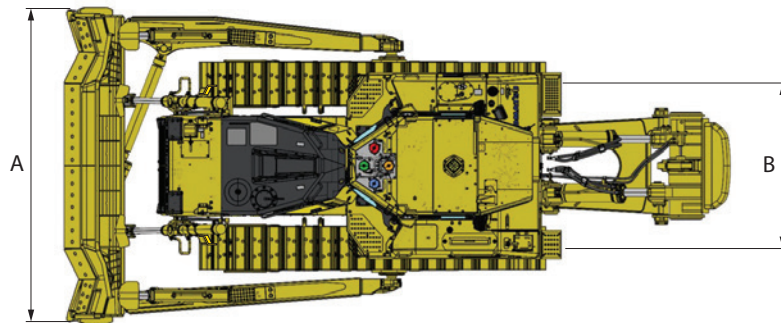


Radio Transmitter

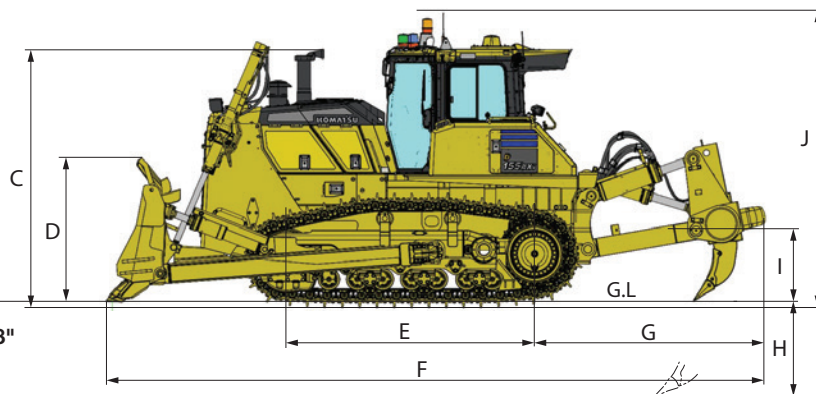
Support Features

- Base machine and technology fully supported by your Komatsu Distributor

A	4060 mm	13'4"
B	2140 mm	7'0"
C	3385 mm	11'1"
D	1850 mm	6'1"
E	3275 mm	10'9"
F	8420 mm	27'7"
G	2745 mm	9'0"
H	1240 mm	4'1"
I	950 mm	3'1"
J	3777 mm	12'5"



Ground clearance: 500 mm 1'8"



AESS906-00

©2016 Komatsu America Corp.

AD05(Electronic View Only)

05/16 (EV-1)

KOMATSU®

Note: All comparisons and claims of improved performance made herein are made with respect to the prior Komatsu model unless otherwise specifically stated.

www.komatsuamerica.com

Komatsu America Corp. is an authorized licensee of Komatsu Ltd. Materials and specifications are subject to change without notice.

KOMATSU®, Komatsu Care® and KOMTRAX® are registered trademarks of Komatsu Ltd.

All other trademarks and service marks used herein are the property of Komatsu Ltd., Komatsu America Corp. or their respective owners or licensees.