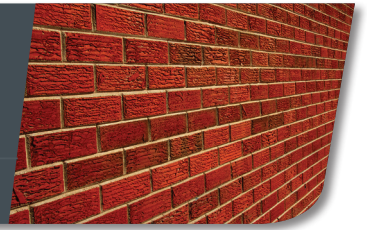




MHT 1490

MHT SERIES HEAVY CAPACITY telescopic handler









PRELIMINARY

KEY FEATURES

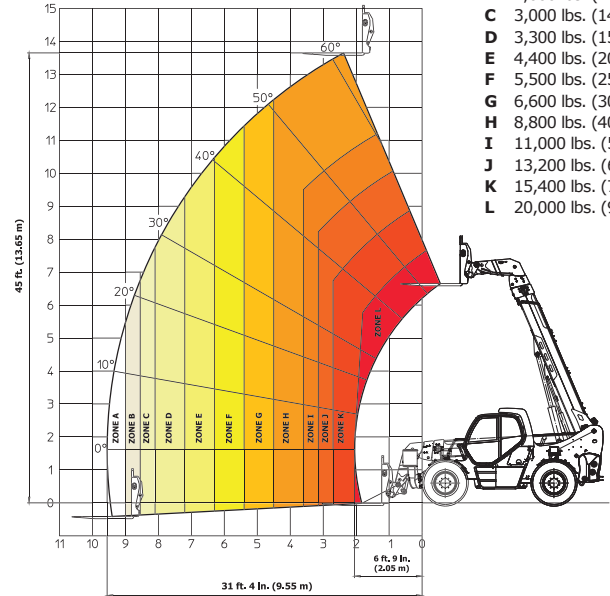
-  46 ft. lift height
-  Ideal for construction, mining, bridge maintenance and oil and gas industries
-  Stabilizers and 3-section chain boom
-  Tier IV-certified
-  Variety of attachments to accommodate any job



MHT 1490					
	CAPACITIES	Lift Capacity (kg)	20,000 lbs. (9072)		
		Max. Lift Height (m)	46'0" (14.0)		
		Capacity at Max. Lift Height (kg)	13,200 lbs. (6000)		
		Max. Forward Reach (m)	31'0" (9.45)		
		Capacity at Max. Forward Reach (kg)	6,600 lbs. (3000)		
	ENGINE	Manufacturer	Mercedes		
		Power (kW)	176 hp (129) Tier IV		
		Model	OM 934LA		
		Maximum Torque (Nm)	553 ft. lbs. (750) @ 1600 rpm		
	COMPONENTS	Transmission	Hydrostatic		
		Max Travel Speed (km/hr)	24.8 mph (40)		
		Drive	4-Wheel		
		Selective Steering	2-Wheel, 4-Wheel, Crab		
		Axle Manufacturer	Dana		
	HYDRAULICS	Total Capacity (L/min)	47.5 gpm (180)		
		Load Sensing JSM Control (bar)	4350 psi (300)		
	GENERAL SPECIFICATIONS	Approximate Weight (kg)	42,990 lbs. (19,500)		
		Length - Less Forks (m)	22'0" (6.71)		
		Width (m)	8'3" (2.50)		
		Ground Clearance (m)	17" (0.44)		
		Wheelbase (m)	11'1" (3.37)		
		Turning Radius (m)	13'2" (4.0)		
		Overall Height (m)	9'10" (3.0)		
		Frame Leveling	+ / - 8°		
		Carriage Rotation	135°		
			CAPACITIES	Hydraulic Reservoir Capacity (L)	72 gal. (275)
				Fuel Tank Capacity (L)	83 gal. (315)

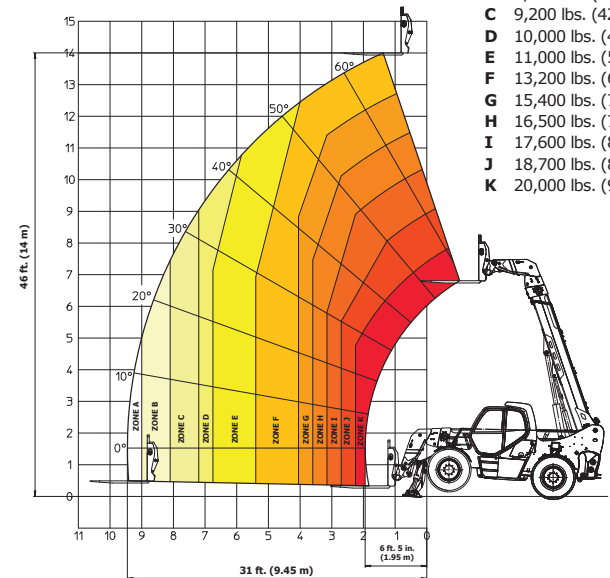
Specifications are preliminary. Manitou reserves the right to change specifications at any time without notice or obligation.

ON TIRES WITH FORKS



- A 2,200 lbs. (1000 kg)
- B 2,600 lbs. (1200 kg)
- C 3,000 lbs. (1400 kg)
- D 3,300 lbs. (1500 kg)
- E 4,400 lbs. (2000 kg)
- F 5,500 lbs. (2500 kg)
- G 6,600 lbs. (3000 kg)
- H 8,800 lbs. (4000 kg)
- I 11,000 lbs. (5000 kg)
- J 13,200 lbs. (6000 kg)
- K 15,400 lbs. (7000 kg)
- L 20,000 lbs. (9000 kg)

ON STABILIZERS WITH FORKS



- A 6,600 lbs. (3000 kg)
- B 8,000 lbs. (3600 kg)
- C 9,200 lbs. (4200 kg)
- D 10,000 lbs. (4500 kg)
- E 11,000 lbs. (5000 kg)
- F 13,200 lbs. (6000 kg)
- G 15,400 lbs. (7000 kg)
- H 16,500 lbs. (7500 kg)
- I 17,600 lbs. (8000 kg)
- J 18,700 lbs. (8500 kg)
- K 20,000 lbs. (9072 kg)

¹ Load charts are EN 1459 B
² 24 inch (600 mm) load center

DIMENSION REFERENCE DIAGRAMS

B	11'1" (3.37)
D	22'0" (6.71)
G1	17" (0.44)
J	3'0" (0.92)
W	8'3" (2.50)
U2	9'10" (3.00)

(m)

