

LOGIX Platinum Series™ shines with other LOGIX innovations

## Platinum Series XRV Panels

LOGIX XRV Panels come in thicknesses of 4, 5, 6, 7 and 8 inches.



LOGIX Platinum Series XRV Panels can be used to construct LOGIX forms that can deliver up to a mind boggling R74.

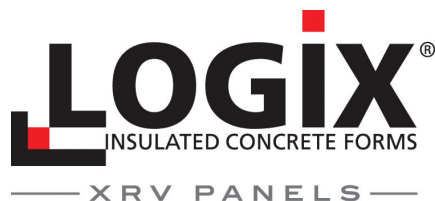
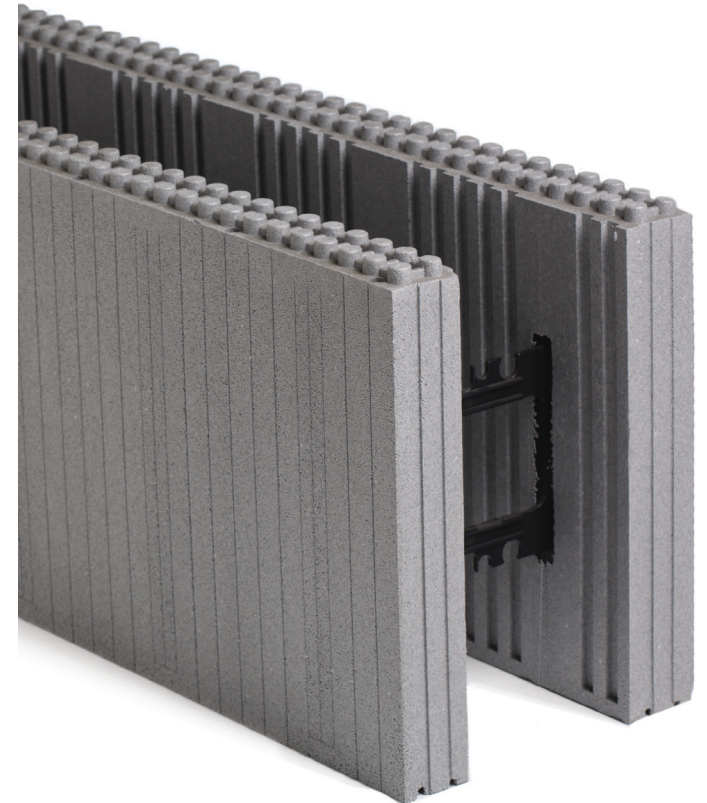
## Platinum Series Hybrid Technology

With LOGIX Hybrid Technology you can interchange solid Logix Pro and unassembled Logix KD blocks. Use Logix Pro to gain time and then, as shown below, use Logix KD to quickly build form units around complex pre-fabricated rebar cages.



LOGIX Platinum Series Hybrid Technology enables you to quickly build large complex high performance buildings.

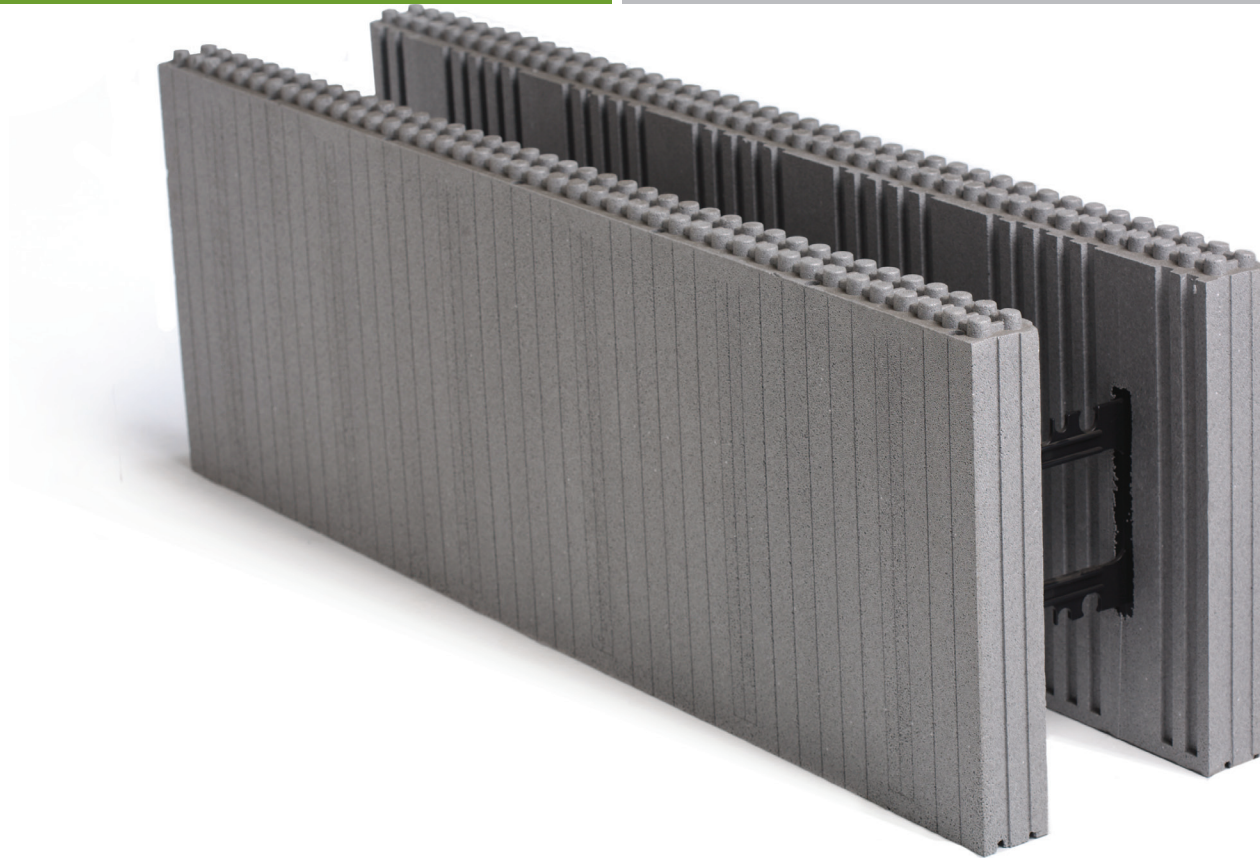
The world's new standard for insulating efficiency and carbon footprint reduction.



1-888-415-6449 | [www.logixicf.com](http://www.logixicf.com) | [info@logixicf.com](mailto:info@logixicf.com)

## The LOGIX Platinum Advantage

LOGIX Platinum Series™ is powered by BASF's patented Neopor® bead. Tiny graphite particles give Neopor its "Platinum" color. These infrared absorbers and heat reflectors reduce thermal conductivity.



- LOGIX Platinum Series provides more R-value without increasing wall thickness.

- LOGIX Platinum Series wall assemblies deliver R28\* with our regular 2.75" panel thickness.

- That's far more R-value than regular ICF's offer.\*

- LOGIX Platinum Series is better for contractors as well. The elimination of the sun glare from regular white panels makes it easier on the eyes.

LOGIX Platinum Series is today's solution for architects, contractors and building owners. The world has a new standard for insulating efficiency and carbon footprint reduction – and it's LOGIX Platinum Series.



by **BASF**

**LOGIX**<sup>®</sup>  
INSULATED CONCRETE FORMS  
PLATINUM SERIES™



\* Refer to LOGIX Technical Bulletin #30 for more information.

1-888-415-6449 | [www.logixicf.com](http://www.logixicf.com) | [info@logixicf.com](mailto:info@logixicf.com)