



# TRACK LOADERS

**RADIAL LIFT**



**1750RT ▲ 2100RT ▲ 2500RT**

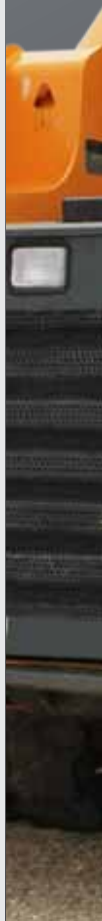


# IN THE BEGINNING

**What began in the 19th century as an agricultural implement manufacturer has grown into a 21st century compact equipment powerhouse – Mustang Compact Equipment.**

Known in the early years as the Owatonna Manufacturing Company, Mustang was among the first to make what is known today as the skid steer loader. Since that time, Mustang has combined old-school experience with innovative processes to offer one of the broadest lines of compact equipment available today.

**MUSTANG. THE ORIGINAL WORKHORSE.**



# HOME-RAISED THOROUGHBREDS



The all-new 2500RT track loader from Mustang raises the bar with its high-capacity strength. Teamed up with its brothers, the 1750RT and 2100RT, these track loaders provide patented, industry-exclusive features sure to blaze a new trail in the track loader market.

Since breaking into the track loader market in 2001, Mustang has learned a thing or two about what it takes to be an industry leader. Combine this expertise with input from some of the market's heaviest track loader users, and you get the home-raised RT Series Track Loaders from Mustang.

**RELIEVE TENSION** ▲ Hydraulic Track Tensioning System automatically tensions the tracks when the engine is started and during operation.

**DIESEL ENGINE STRENGTH** ▲ A naturally aspirated engine on the 1750RT provides 69.9 hp (52.1 kW), while the turbocharged engines in the 2100RT and 2500RT offer 72 hp (53.7 kW) and 74.3 hp (55.4 kW) for class leading tractive effort and fuel efficiency.

**RADIAL-LIFT, LOW PROFILE BOOM** ▲ High-strength, low-profile design increases operator visibility and provides additional reach at trailer loading and unloading heights.

**REDESIGNED CAB INTERIOR** ▲ Ergonomic, adjustable operator's station provides class leading comfort and safety.

**1750RT ▲ 2100RT ▲ 2500RT**

# DOMINATE IN THE DIRT



## 1750RT 2100RT 2500RT

Reduce the worries of proper track tension with our industry-exclusive Automatic Track Tensioning System.

**STRAIGHT TRACKING** ▲ Stay on the right path with the new straight tracking feature, which eliminates dog-tracking. Available on the 2500RT.

**AUTO TENSION** ▲ The Mustang-patented Auto Track Tensioning System hydraulically maintains proper tension during operation and releases tension when the engine is turned off.



ENGINE NOT RUNNING



ENGINE RUNNING



**OPTIMIZED RADIAL BOOM DESIGN** ▲ offers increased strength and up to 128" (3251 mm) of lift height – higher than any competitor in their respective weight classes.



**5X5 RIDE CONTROL SYSTEM** ▲ offers five settings that adjust five operational characteristics to suit operator preference and application requirements.



**DEDICATED, WELDED TRACK LOADER CHASSIS** ▲ adds durability and aids in superior weight distribution, which enhances stability, grading and tractive effort.

# ROUGH TERRAIN DOMAIN



**ANTISTALL TECHNOLOGY** ▲ monitors and adjusts the hydrostatic drive pump, resulting in tractive effort of 11,840 lbs. (5371 kg) on the 1750RT, 12,359 lbs. (5606 kg) on the 2100RT, and 14,317 lbs. (6494 kg) on the 2500RT.



**HYDRAULIC SYSTEM** ▲ with flow up to 37.4 gpm (141.6 L/min.) on the 2500RT delivers high performance and fast cycle times. Lift cylinders incorporate cushioning for smoother operation when lowering the lift arm.



**SERVICEABILITY** ▲ is made easy with a large gas-spring assisted engine cover and tiltable ROPS/FOPS assembly. Patented tilt-out foot pod allows for best-in-class foot well cleanout and easy access to components under the cab.

**1750RT ▲ 2100RT ▲ 2500RT**

# CLIMB INTO THE SADDLE



## EXCELLENT VISIBILITY ▲

A cab-forward design enhances the view to the bucket cutting edge from the operator's seat.



## INSTRUMENTATION ▲

Clear, easy-to-read information is available at all times with a customizable multi-function display.



## SIDE RESTRAINT BARS ▲

Side-folding restraint bars and adjustable arm rests provide personalized comfort and increased safety.



## JOYSTICK CONTROLS ▲

Fully adjustable controls mounted to the operator's seat allows them to move with the operator for precise control.



**PRESSURIZED CAB ▲** An optional pressurized, sealed cab enclosure provides a cleaner, quieter operating environment.

When you're in the cab, you take the reins.

The Mustang RT Series Track Loaders offer a deluxe operator's station with the options needed to tailor the space to YOUR needs.





### MULTI-TACH® SYSTEM ▲

standard on all models is this universal-style attachment mounting system that is compatible with most allied attachments.



### POWER-A-TACH® SYSTEM ▲

optional on all models, users quickly install and remove attachments electronically, leaving the seat only to connect auxiliary hydraulics.

# TIME IS MONEY GET ATTACHED

With a wide variety of EDGE® attachments available from your dealer, the RT Series Track Loaders are easily transformed to meet the needs of your business.



**EDGE**  
www.ceattachments.com



FEATURES	1750RT	2100RT	2500RT
<b>PERFORMANCE</b>			
Multi-Tach® Mounting System	●	●	●
Hydraulic Track Tensioning System	●	●	●
Straight Tracking			●
Power-A-Tach® Mounting System	●	●	●
Self-Leveling Hydraulic Lift Action	●	●	●
Selectable Self-Leveling Lift Action	●	●	●
Two-speed Hydrostatic Drive System	●	●	●
12-volt battery	●	●	●
<b>ENGINE</b>			
Engine Alert System w/ Error Display	●	●	●
Engine Automatic Shutdown System	●	●	●
Grid/Manifold Heater Starter Assist	●	●	●
Dual-Element Air Cleaner w/ Indicator	●	●	●
<b>HYDRAULIC SYSTEM</b>			
Auxiliary Hydraulics	●	●	●
High-Flow Auxiliary Hydraulics	●	●	●
<b>UNDERCARRIAGE</b>			
Elevated Planetary Final Drives	●	●	●
Maintenance Free Rollers Each Side	3	4	4
Single Flange Front/Dual Flange Rear Idlers	●	●	●
Rubber Track Undercarriage System	●	●	●
Servo-Controlled Hydrostatic Drive	●	●	●
Dedicated Undercarriage	●	●	●
<b>STRUCTURE</b>			
Tilt-out Foot Pod	●	●	●
Back-up Alarm	●	●	●
Combination Radiator & Hydraulic Oil Cooler	●	●	●
ROPS/FOPS Level II Overhead Guard	●	●	●
Anti-Vandalism Lock Provisions	●	●	●
Mechanical Lift Cylinder Lock	●	●	●
<b>OPERATOR'S STATION</b>			
Pressurized Cab Enclosure with A/C	●	●	●
Multi-Function Function Display Screen	●	●	●
5x5 Drive Control System	●	●	●
Electro-Hydraulic Joystick Controls	●	●	●
Selectable Control Pattern Configuration	●	●	●
Variable Speed Control, Selectable On & Off	●	●	●
Foot Throttle	●	●	●
Full-Suspension Seat	●	●	●

● STANDARD ● OPTIONAL ● EXCLUSIVE - STD.

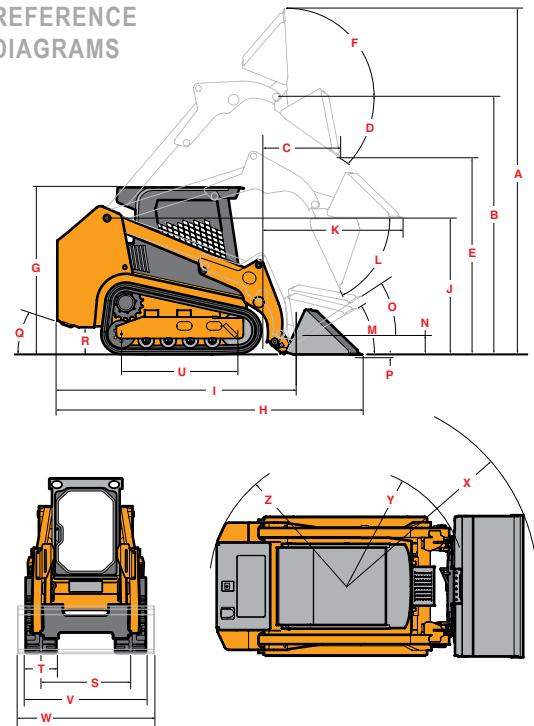
1750RT ▲ 2100RT ▲ 2500RT

SPECIFICATIONS		1750RT	2100RT	2500RT
DIMENSIONS	A. Overall Operating Height – Fully Raised (mm)	168" (4267)	172" (4369)	175.2" (4450)
	B. Height to Hinge Pin – Fully Raised (mm)	127.5" (3239)	128" (3251)	128" (3251)
	C. Reach – Fully Raised (mm)	34.5" (876)	37.0" (940)	39.2" (996)
	D. Dump Angle – Fully Raised	40.2°	39°	41°
	E. Dump Height – Fully Raised (mm)	98" (2489)	95.7" (2431)	91.7" (2329)
	F. Maximum Rollback Angle – Fully Raised	102.5°	102.5°	102.5°
	G. Overall Height at ROPS (mm)	82.8" (2103)	83.1" (2111)	83.1" (2111)
	H. Overall Length w/ Bucket – Std. c-wt. (mm)	144.0" (3658)	152.3" (3868)	166.0" (4216)
	I. Overall Length w/o Bucket – Std. c-wt. (mm)	110.8" (2814)	114.5" (2908)	125.0" (3175)
	J. Specified Height (mm)	67.5" (1715)	67.7" (1720)	67.7" (1720)
	K. Reach at Specified Height (mm)	31.1" (790)	31.8" (808)	32.0" (813)
	L. Dump Angle at Specified Height	75°	75°	75°
	M. Maximum Rollback Angle at Ground	30°	30°	30°
	N. Carry Position (mm)	7" (179)	7" (179)	7" (179)
	O. Maximum Rollback Angle at Carry Position	33°	33°	33°
	P. Digging Position – Below Ground (mm)	-0.3" (7.6)	-0.2" (5.1)	-0.2" (5.1)
	Q. Angle of Departure with Std. c-wt.	30.4°	29.2°	25°
	R. Ground Clearance (mm)	13.3" (343)	13" (330)	13" (330)
	S. Track Gauge (mm)	51.7" (1313)	51.7" (1313)	51.7" (1313)
	T. Track Shoe Width (mm)	12.6" (320)	17.7" (450)	17.7" (450)
	U. Crawler Base (mm)	54.8" (1392)	58.4" (1483)	61.5" (1562)
	V. Overall Width – Less Bucket (mm)	64.4" (1636)	69.5" (1765)	69.5" (1765)
	W. Bucket Width (mm)	65.9" (1674)	73.9" (1877)	83.9" (2131)
	X. Clearance Radius – Front With Bucket (mm)	91.4" (2322)	98.1" (2492)	104.7" (2659)
	Z. Clearance Radius – Rear w/ Std. c-wt. (mm)	62.1" (1577)	64.6" (1641)	70.7" (1796)
	Maximum Rollback at Specified Height	66.8°	66.8°	66.8°
Angle of Approach	90°	90°	90°	
Grouser Height (mm)	1" (25)	1" (25)	1" (25)	
CAPACITY	Operating Capacity at 35% Tipping Load (kg)	1750 lbs. (794)	2100 lbs. (953)	2500 lbs. (1134)
	Operating Capacity at 50% Tipping Load (kg)	2500 lbs. (1134)	3000 lbs. (1361)	3571 lbs. (1620)
	Tipping Load (kg)	5000 lbs. (2268)	6000 lbs. (2722)	7143 lbs. (3240)
	Operating Weight (kg)	8605 lbs. (3903)	9890 lbs. (4486)	11,595 lbs. (5259)
ENGINE	Make/Model	Yanmar / 4TNV98 Interim Tier 4	Yanmar / 4TNV98T Interim Tier 4	Deutz / TD 3.6 Tier 4
	Type	4-Stroke Naturally Aspirated	4-Stroke Turbo	4-Stroke Turbo
	Displacement (L) / cylinders	203 cu.in. (3.3) / 4	203 cu.in. (3.3) / 4	221 cu.in. (3.6) / 4
	Gross Power (kW) @ rpm	69.9 hp (52.1) @ 2500	72 hp (53.7) @ 2500	74.3 hp (55.4) @ 2300
	Net Power (kW) @ rpm	68.4 hp (51) @ 2500	70.7 hp (52.7) @ 2500	NA
	Peak Torque (Nm) @ rpm	179 ft.-lbs. (242.7) @ 1600	206 ft.-lbs. (279.3) @ 1700	243 ft.-lbs. (330) @ 1500
	Oil Pump Capacity (L)	11 qts. (10.4)	11 qts. (10.4)	9 qts. (8.5)
Alternator Voltage/Amperage	14V / 95A	14V / 95A	14V / 95A	
TRACK DRIVES	Drawbar Pull / Tractive Effort (kg)	11,840 lbs. (5371)	12,359 lbs. (5606)	14,317 lbs. (6494)
	Track Type / Track Rollers / Roller Type	Rubber / 4 / Steel	Rubber / 5 / Steel	Rubber / 5 / Steel
	Track Width (mm)	12.6" (320)	17.7" (450)	17.7" (450)
	Ground Pressure (bar)	6.2 psi (0.43)	4.7 psi (0.32)	5.3 psi (0.37)
FORCES	Bucket Breakout – Tilt Cylinder (kg)	5189 lbs. (2354)	5492 lbs. (2491)	6894 lbs. (3127)
	Bucket Breakout – Lift Cylinder (kg)	4840 lbs. (2195)	5398 lbs. (2449)	6786 lbs. (3078)
	Ground Speed – Single Speed (km/hr)	5.1 mph (8.2)	5.4 mph (8.7)	5.4 mph (8.7)
	Ground Speed – Two Speed (km/hr)	7.5 mph (12.1)	7.9 mph (12.7)	7.9 mph (12.7)
VOLUME	Fuel Tank (L)	24 gal. (91)	24 gal. (91)	24 gal. (91)
	Hydraulic Reservoir Tank (L)	11.0 gal. (41.6)	13.8 gal. (52.2)	13.8 gal. (52.2)
	Coolant Capacity (L)	3.5 gal. (13.3)	3.8 gal. (14.4)	5.1 gal. (19.3)
HYDRAULICS	Auxiliary Hydraulic Flow – Rated Speed (L/min)	18.5 gpm (70.0)	21.8 gpm (82.5)	24.9 gpm (94.3)
	High-Flow Hydraulic Flow – Rated Speed (L/min)	34.0 gpm (128.8)	35.9 gpm (135.8)	37.4 gpm (141.6)
	Transmission Pump Type	Axial Piston	Axial Piston	Axial Piston
	Motor Type	Axial Piston with Planetary Gear Box Reduction		
BATTERY	Battery Volts	12V	12V	12V
	Cold Cranking Amps at Temperature	850 CCA @ 0°F (-18°C)	850 CCA @ 0°F (-18°C)	950 CCA @ 0°F (-18°C)

# ORIGINAL WORKHORSE

Mustang authorized dealers offer a full line of compact equipment, backed up by exceptional sales, service and parts support. To find your nearest authorized Mustang dealer, visit the Dealer Locator on [mustangmfg.com](http://mustangmfg.com)

## REFERENCE DIAGRAMS



For more information on the RT Series Track Loaders and the rest of the Mustang equipment line, call our hotline at

**1-800-628-0491**

or visit [mustangmfg.com](http://mustangmfg.com)



West Bend, WI 53095 U.S.A.

Tel: 262-334-9461

Fax: 262-338-7517



This product is created with materials from well-managed forests, controlled sources, and contains a minimum of 10% post consumer waste.

Mustang reserves the right to make changes in specifications at any time without notice or obligation.